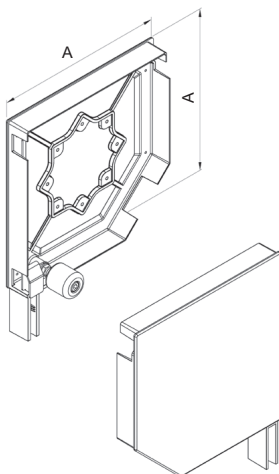


We would like to inform you that since 2020.01.20, new **BS 45/ER** end caps with roll and **KBS 45/ER** console have been introduced to the offer. The current solution will be available while stocks last.


BS 45 / ER

NEW



End cap 45° - pin type II

Packing: pair

	A	
BS45/ER/250/x	252	6
BS45/ER/300/x	302	6

x Colour

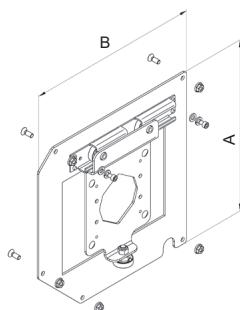
00	mill finish
01	silver
02	white
03	grey
08	dark brown
09	brown
23	anthracite grey
28	nut
30	golden oak

	00	01	02	03	08	09	23	28	30
BS45/ER/250/x	x	x	x	x	x	x	x		x
BS45/ER/300/x	x	x	x	x	x	x	x	x	x

Systems BGR / BKR

KBS 45 / ER


NEW



Consoles for end caps

Packing: set

- KBS45/ER/250** • galvanized, used with end caps: BS45/ER/250
- KBS45/ER/300** • galvanized, used with end caps: BS45/ER/300

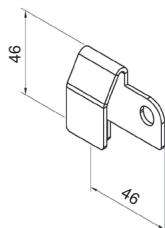
	A	B	
KBS45/ER/250	237	238	1
KBS45/ER/300	287	288	1

The set contains [pcs]	
Console	1
Screw M6x16	4/5
Flange nut M6	4/5

Systems BGR / BKR

SLB/1

NEW

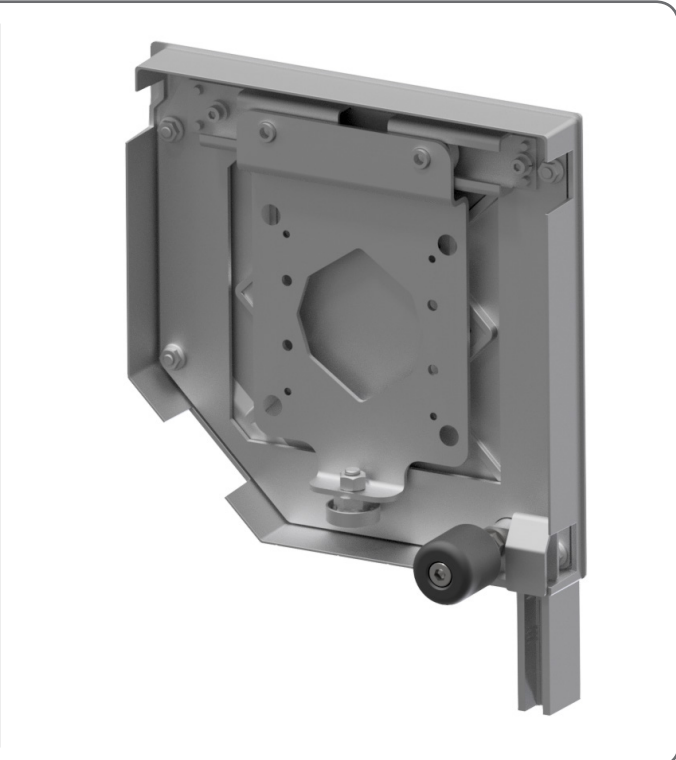
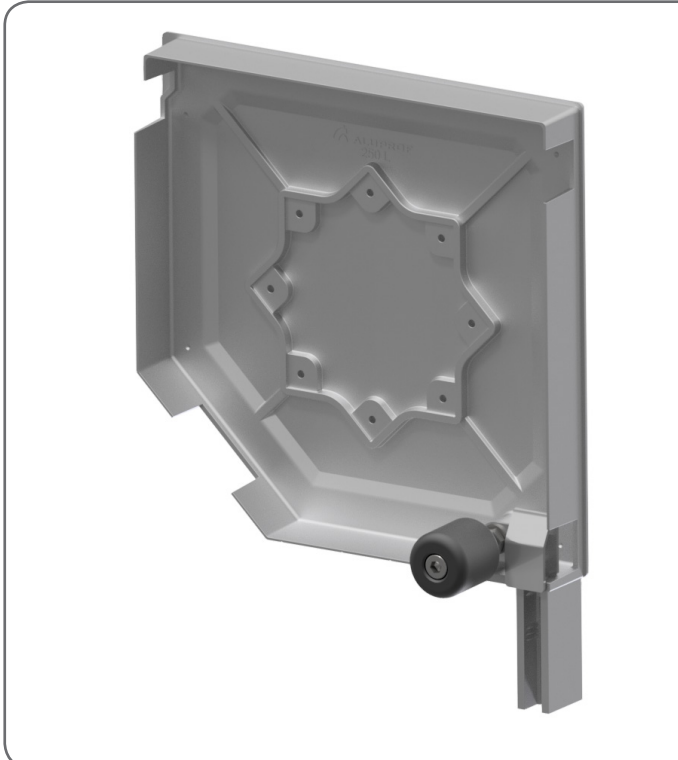


Slide

Packing: 6 pair

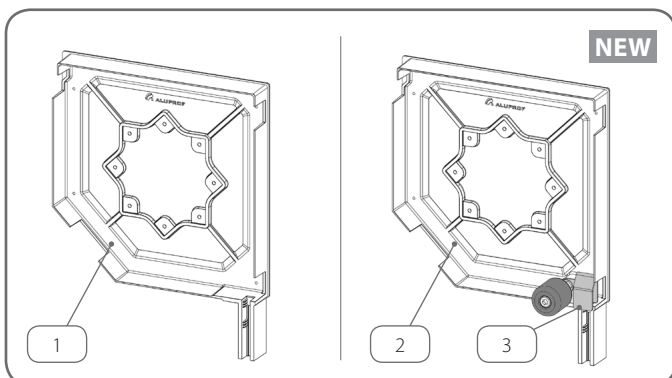
- SLB/1** • for end caps BS 45 / ER

Systems BGR / BKR

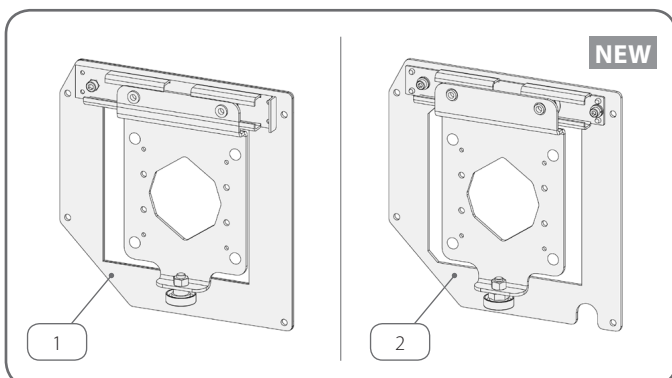


Current Products

New products



	Name of the component	Catalogue code
1.	End cap 45° - pin type II	BS 45/250 BS 45/300
2.	End cap 45° - pin type II	BS 45/ER/250 BS 45/ER/300
3.	Slide	SLB/1

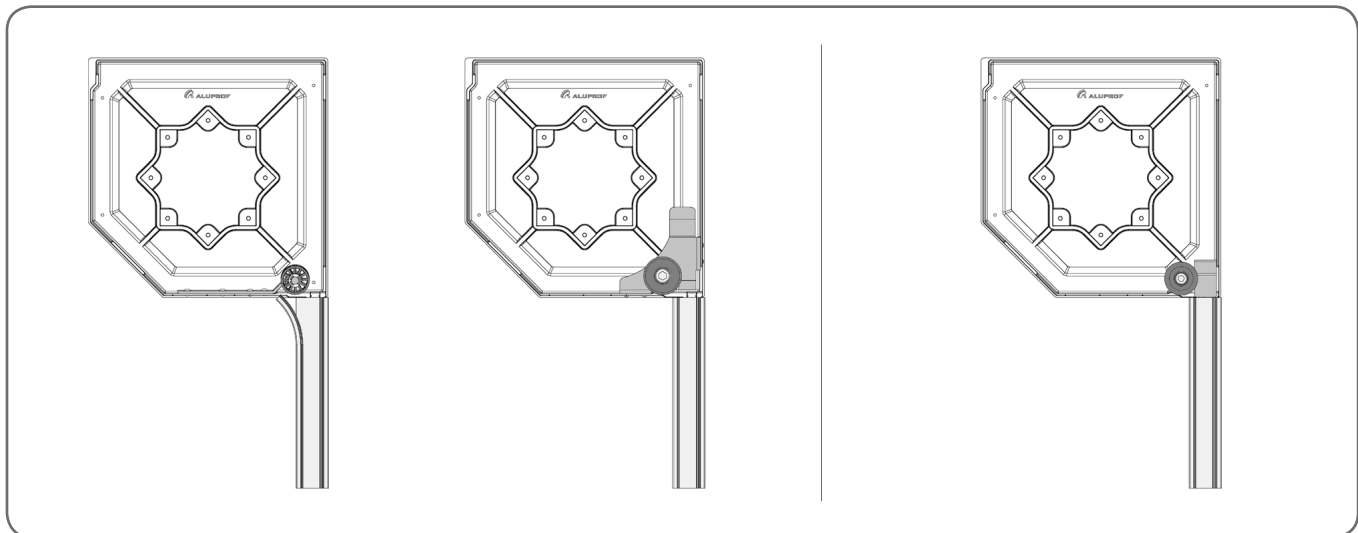
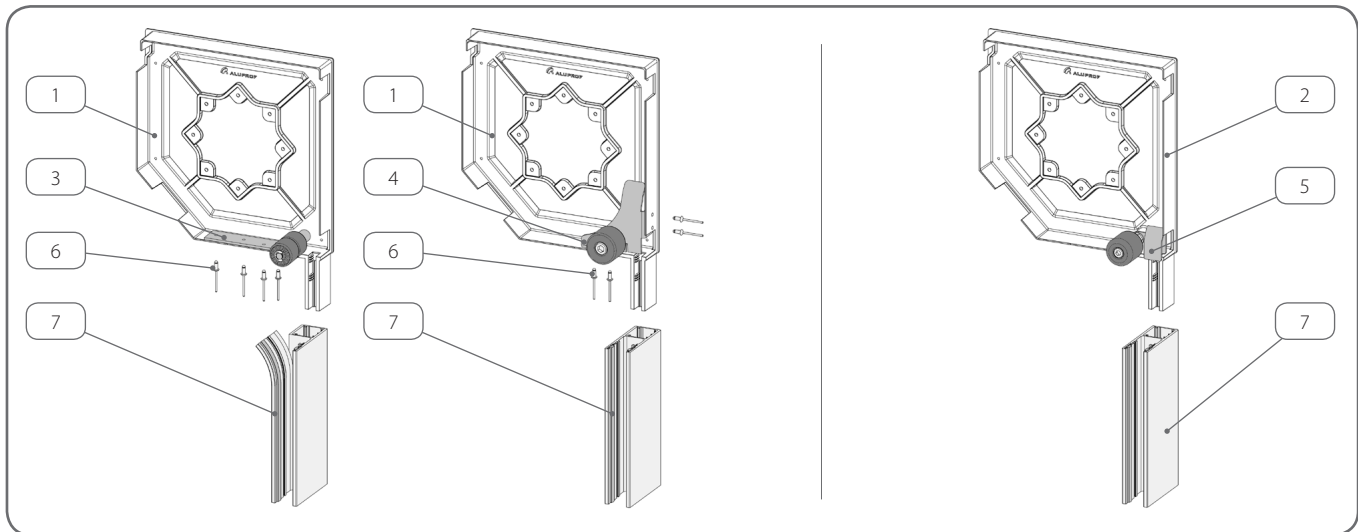


	Name of the component	Catalogue code
1.	Consoles for end caps	KBS 45/250 KBS 45/300
2.	Consoles for end caps	KBS 45/ER/250 KBS 45/ER/300

INSTALLATION METHOD

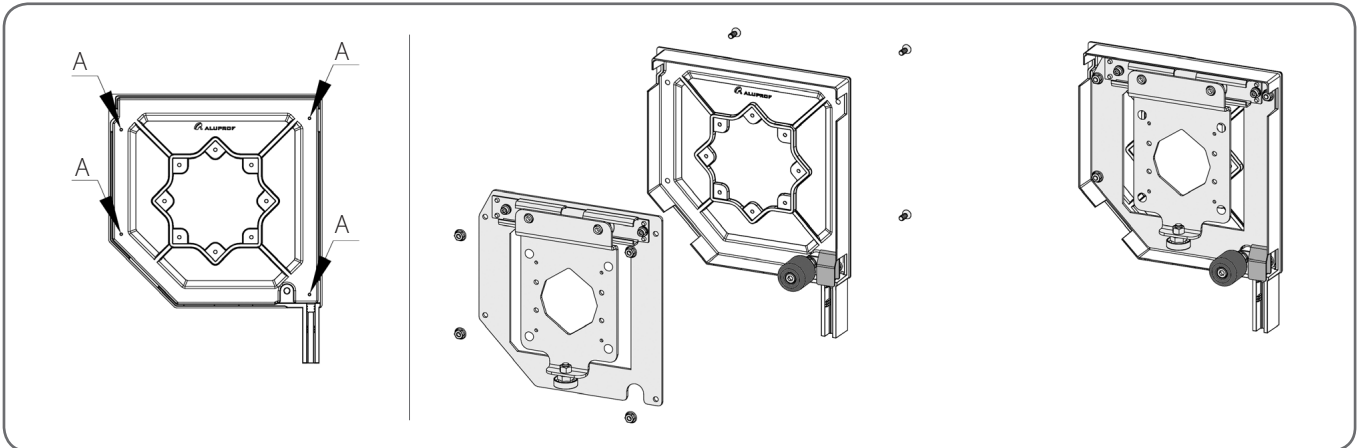
Currently used solutions

New solution



	Name of the component	Catalogue code
1.	End cap 45° - pin type II	BS 45/250 BS 45/300
2.	End cap 45° - pin type II	BS 45/ER/250 BS 45/ER/300
3.	Metal-polyamide guide roll	ER2
4.	Metal-polyamide guide roll	ER3
5.	Slide	SLB/1
6.	Rivets	PN4x8
7.	Guide channel	

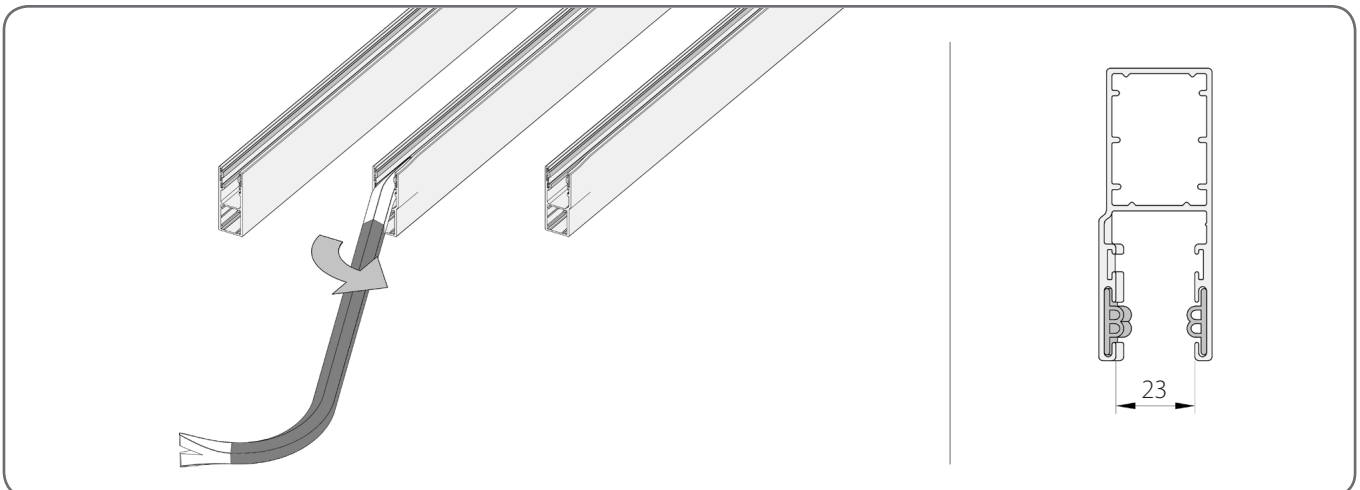
The side covers have markings (A) for preparing holes for the elements connecting the console to the end cap.



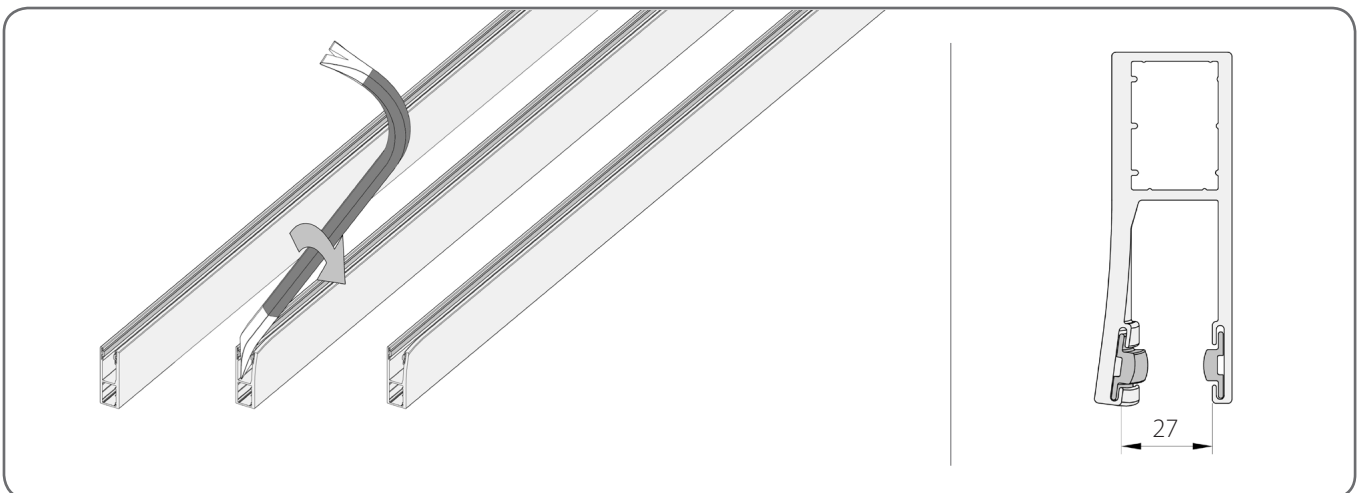
GUIDE CHANNELS TECHNOLOGY

The use of new side covers requires adequate preparation of selected guide channels.

Guide channel PP 75



Reinforced guide channel PPW 90



Guide channel PP 75 with profile PEK 52

Current technology of guide channels preparation with PEK 52 profile has not changed, only rollers from the end cap should be removed.

